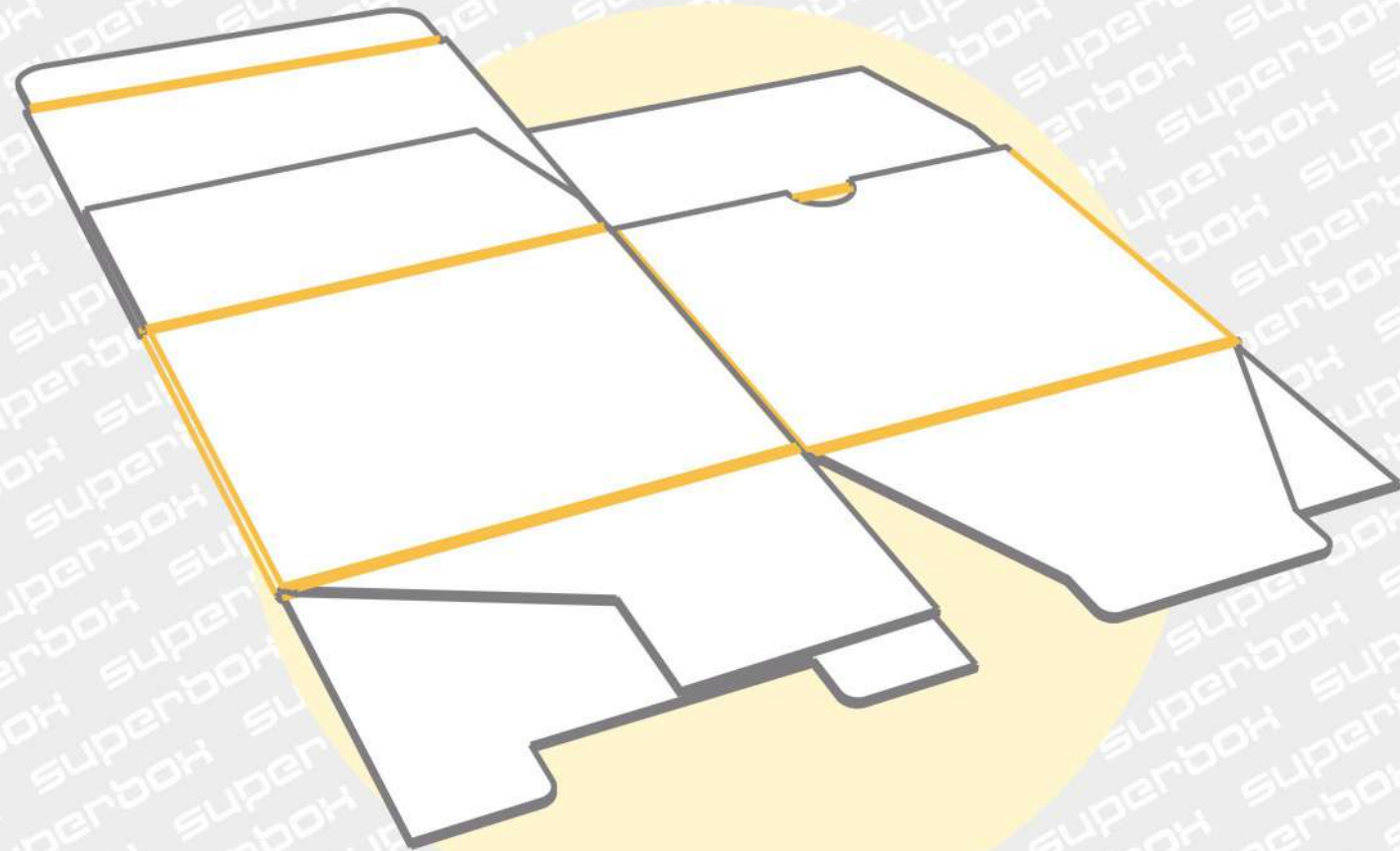


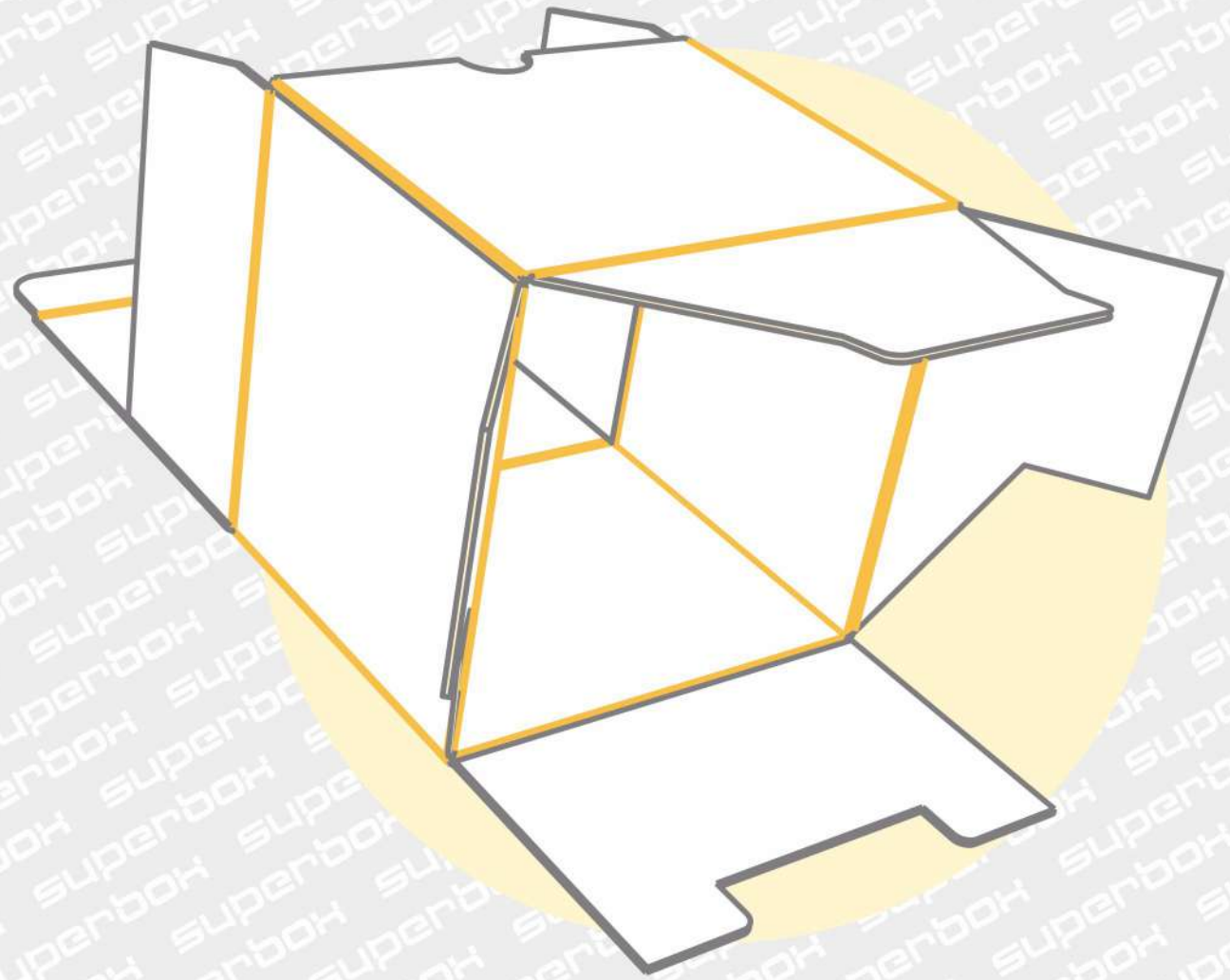
# Folding instruction

for the FEFCO 0215 box

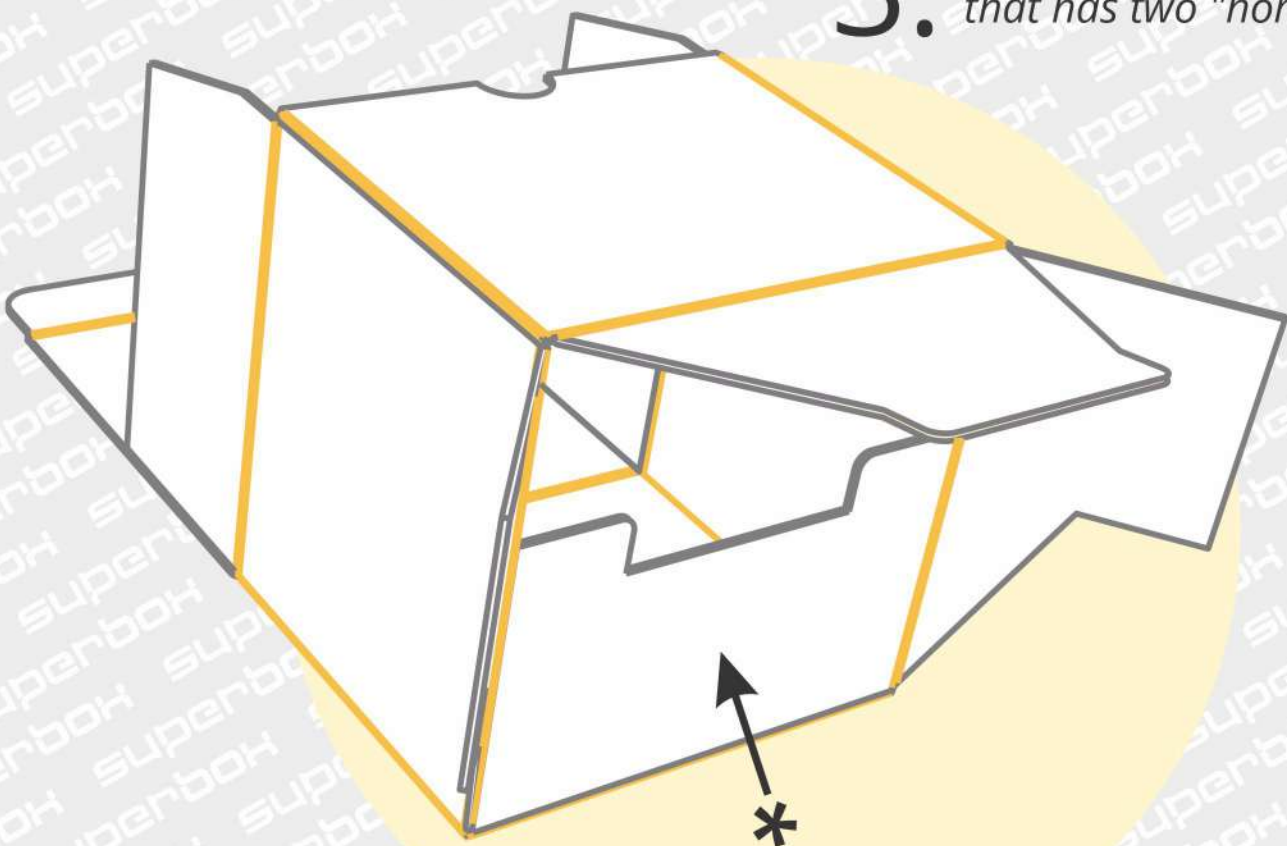
1. Turn the template downside towards yourself.



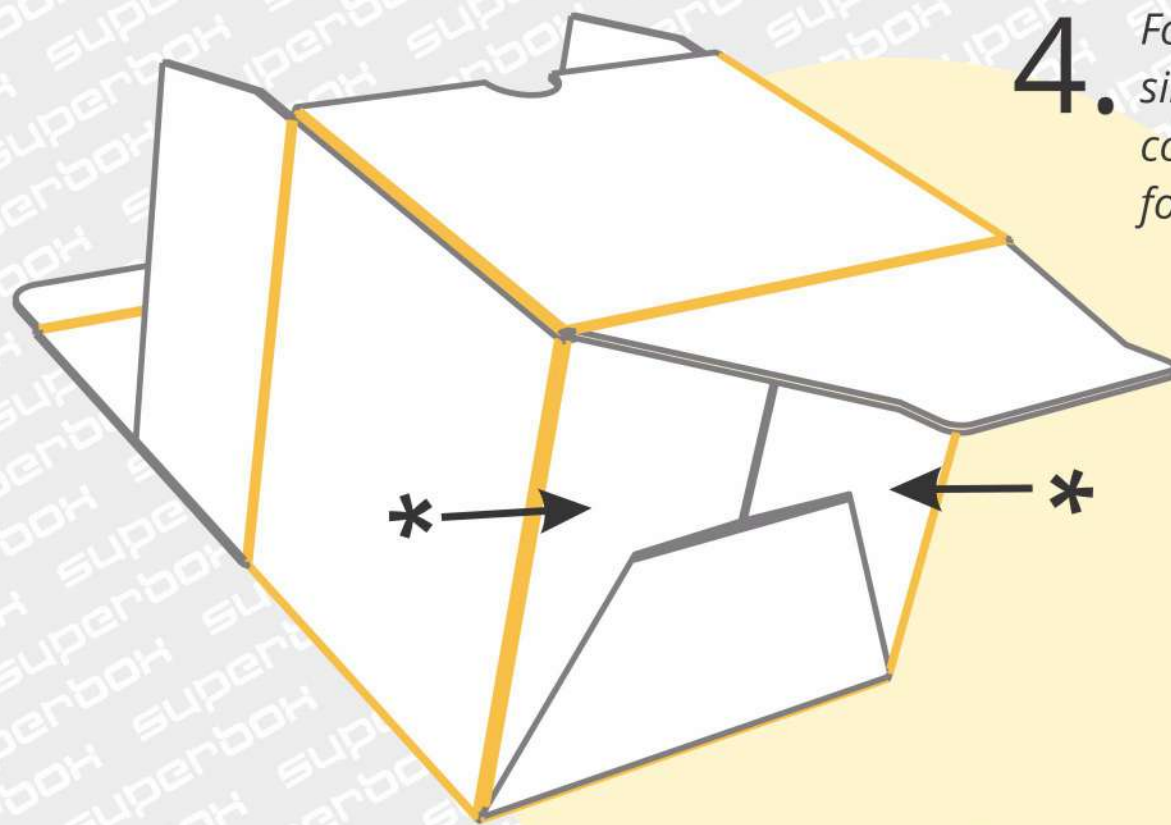
2. Carefully unfold the box so that the side walls of the box stand at approximately 90 degrees.



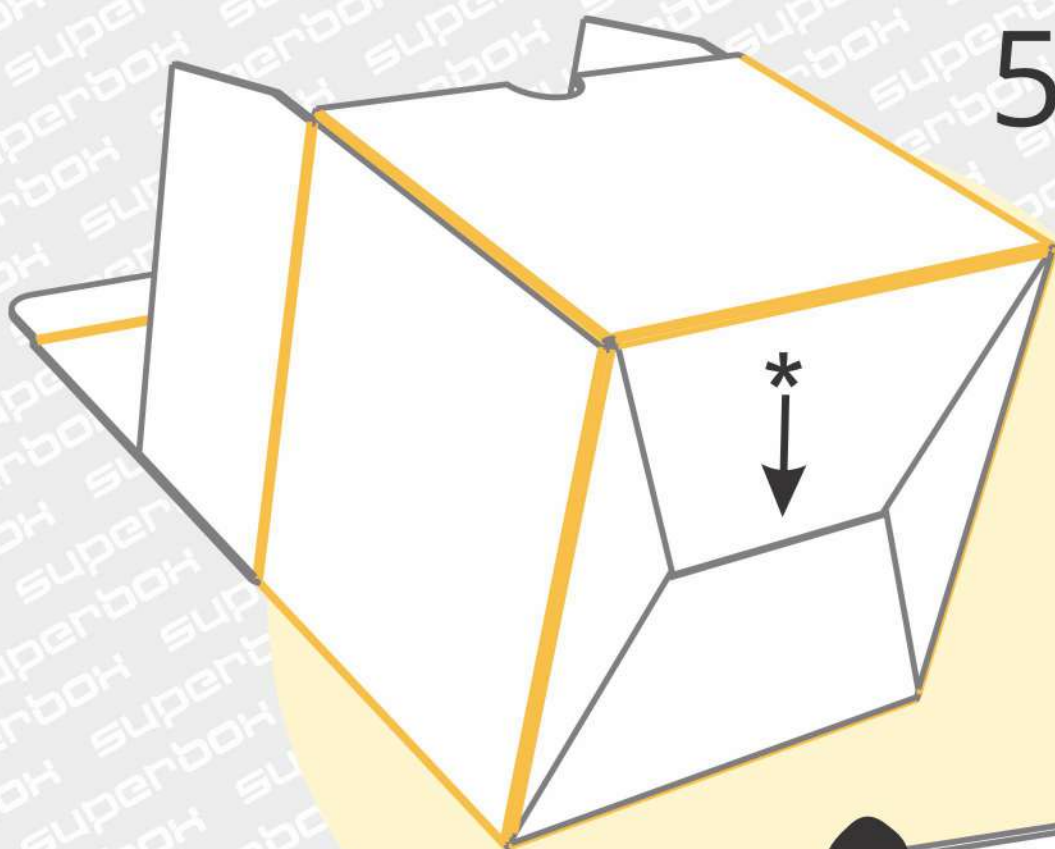
3. \* Fold the bottom piece that has two "horns".



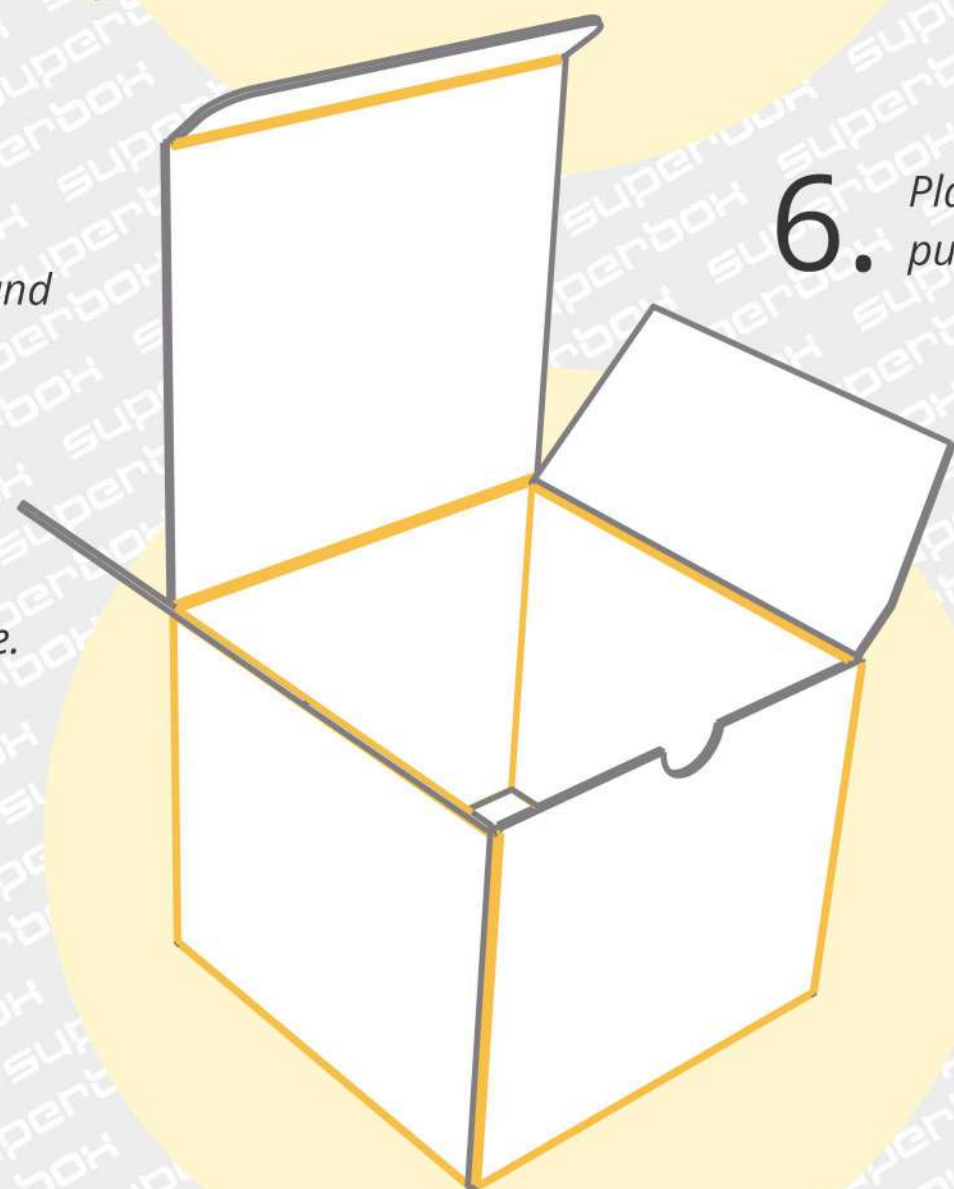
4. Fold the two side bottom pieces similar to each other. They must cover the "horns" of the piece folded in step 3.



5. Fold the remaining bottom piece and click it in the middle of the bottom so that the tip of the bottom piece slides into the gap between the previously folded pieces. The folded bottom should slightly resemble the shape of an envelope.



6. Place the box upright and put the items you want inside.



7. Fold in the side ears of the lid. Don't forget to feed your cat so it doesn't chew the folding boxes!



8. Close the lid. If your cat has managed to chew on the box, you can hide the imperfection by tying a ribbon or sticking a sticker on it.

