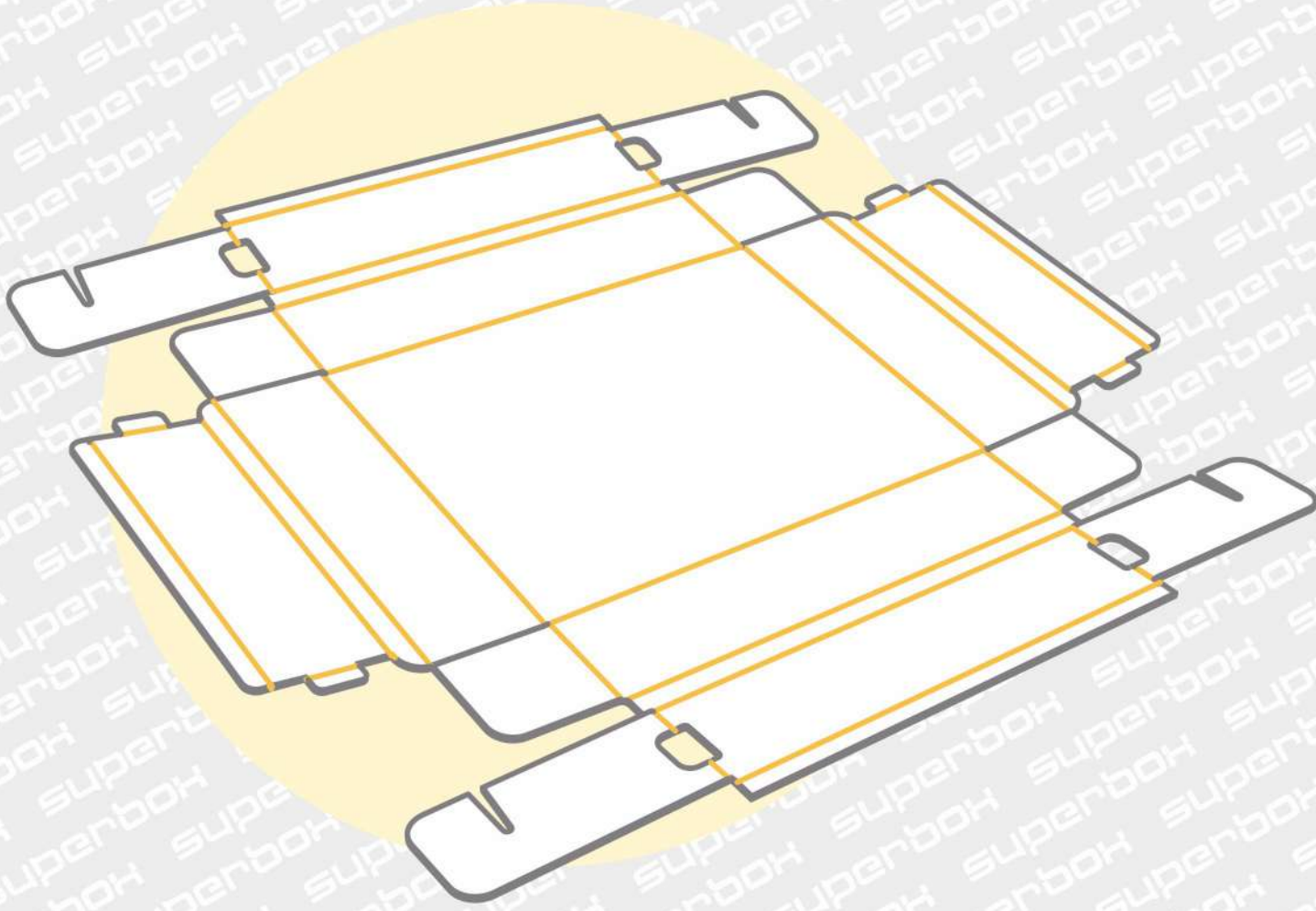


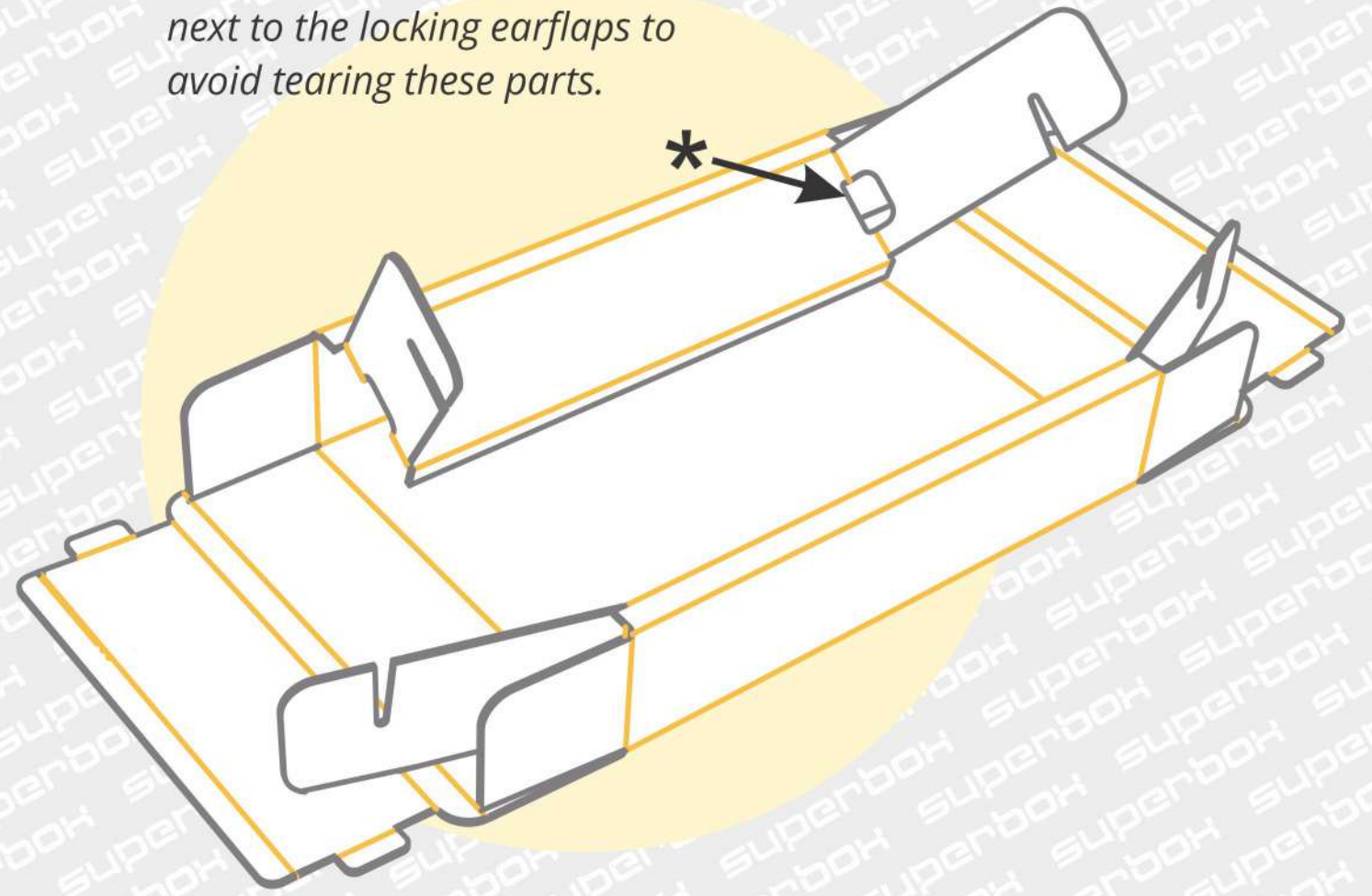
Folding instruction

For boxes with a sleeve

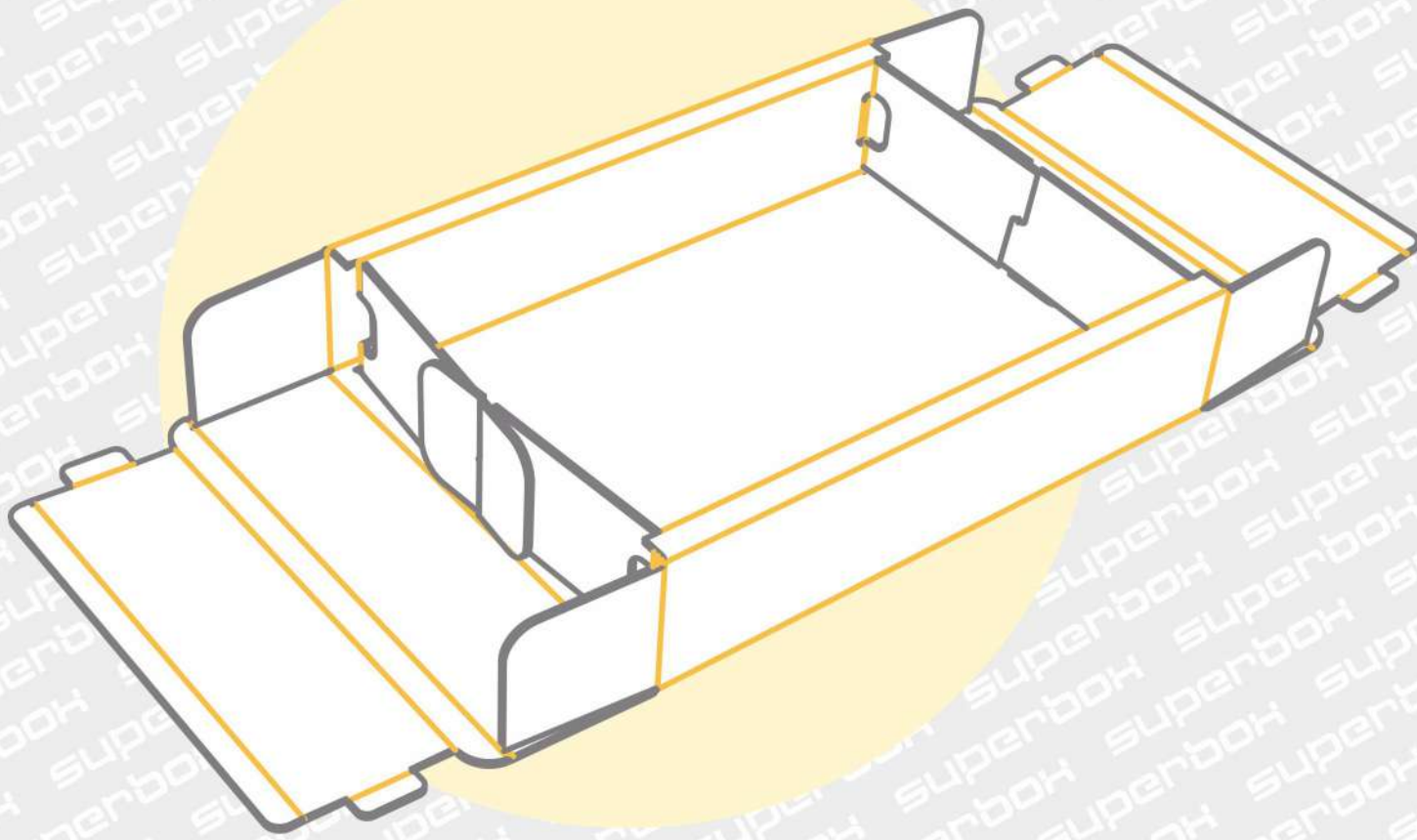
1. Place the template on a flat surface and put a little stress on the bending lines by folding them slightly back and forth.



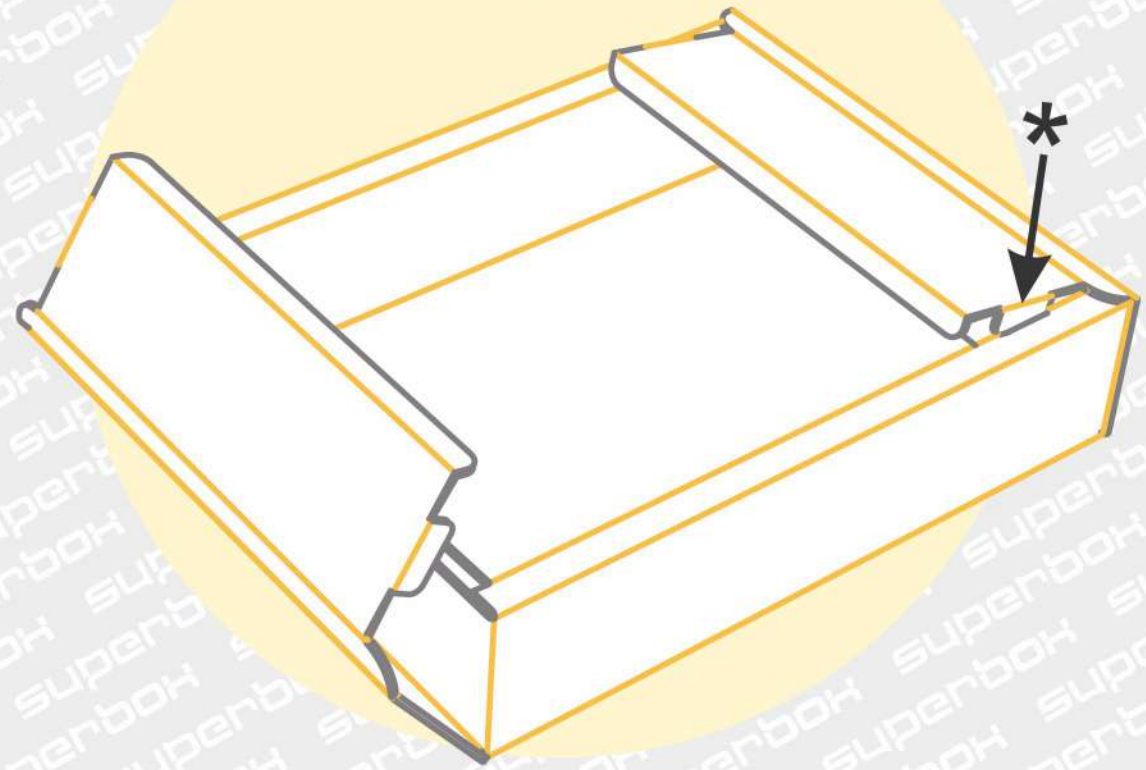
2. Position the side walls and fold them so that the folded wall forms a nozzle.
* carefully bend the bending lines next to the locking earflaps to avoid tearing these parts.



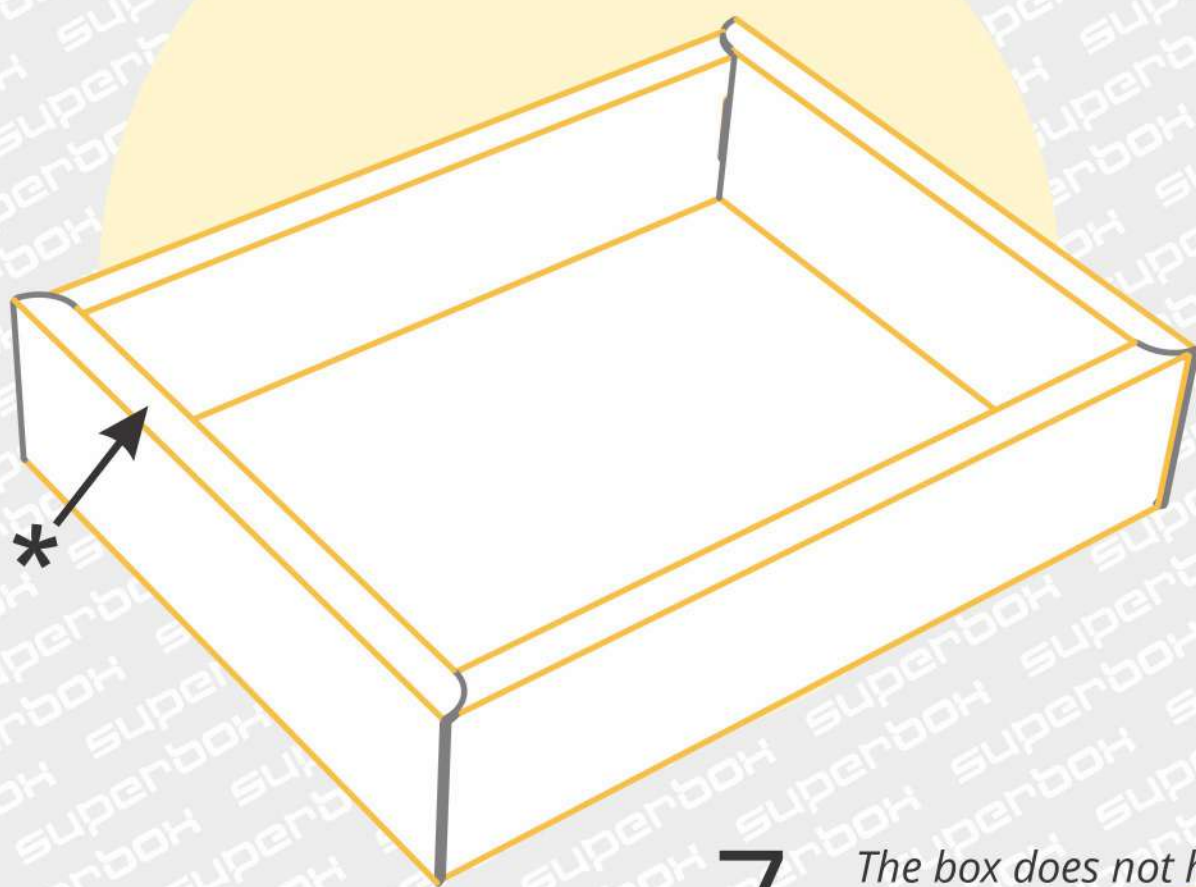
3. Carefully fold the locking earflaps in the opposite direction and pull them together.



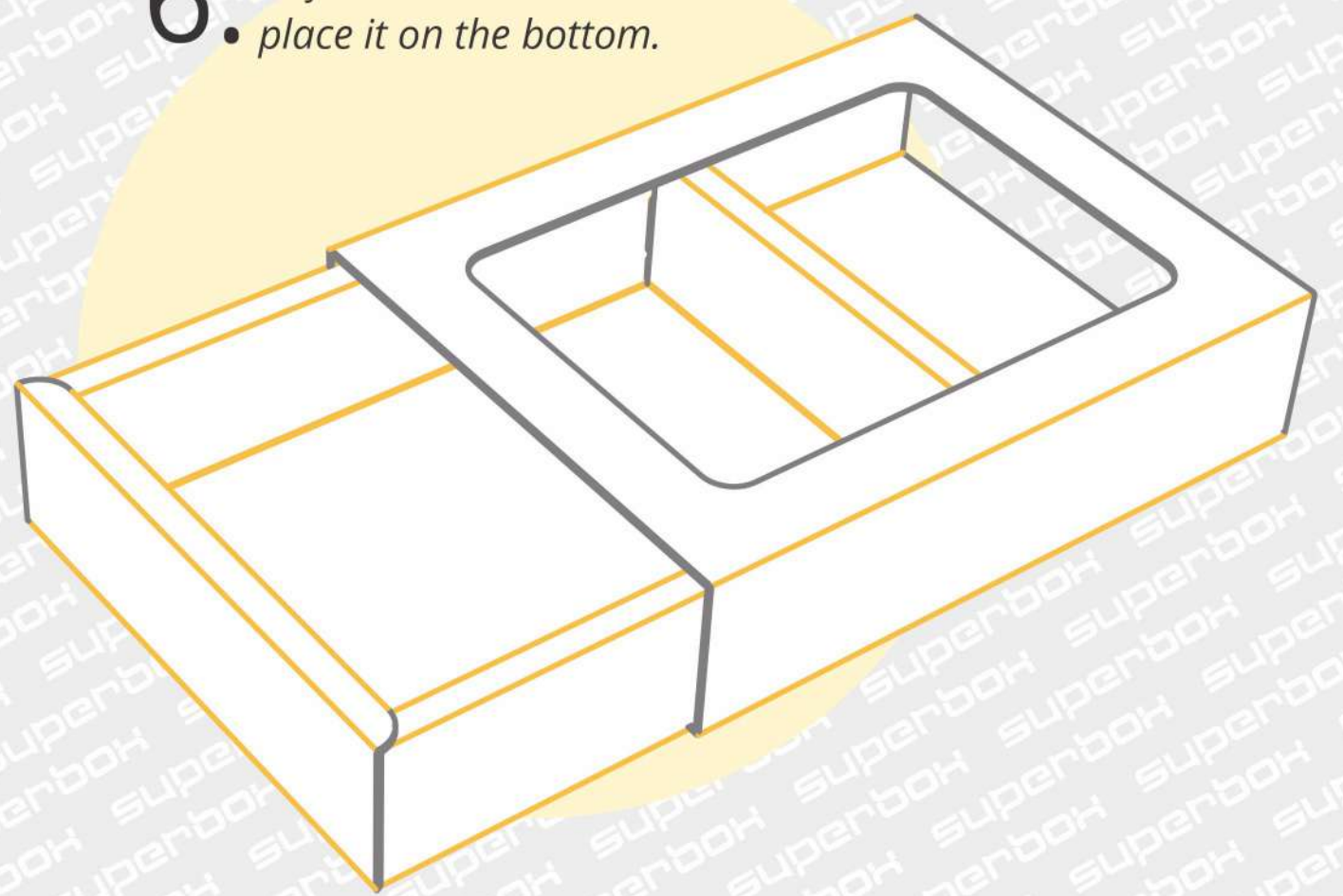
4. Fold the small flaps over the already folded walls and fold the remaining side walls around the folded ears and small flaps.
* fold the small fixating latches while bending the wall. They must fit into the holes on the plane of the locking earflaps.



5. When the base of the box is folded, the bottom of the box remains flat.
* the curve lines of the curbs must bend at 90 degrees, otherwise the sleeve may be very difficult to get on.



6. Unfold the sleeve and place it on the bottom.



7. The box does not have a tail. If the tail still sticks out, check that you haven't pressed the cat.

