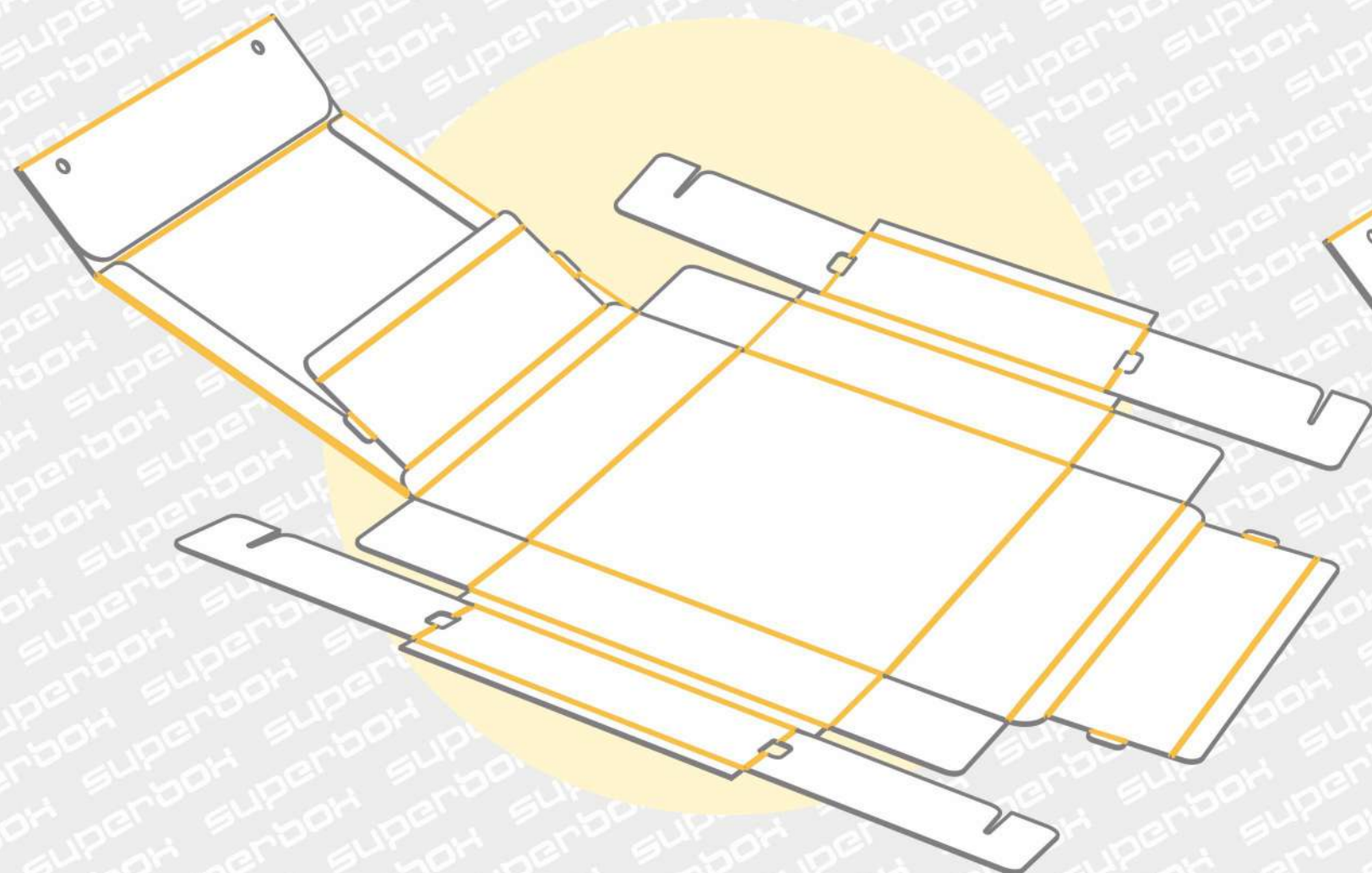


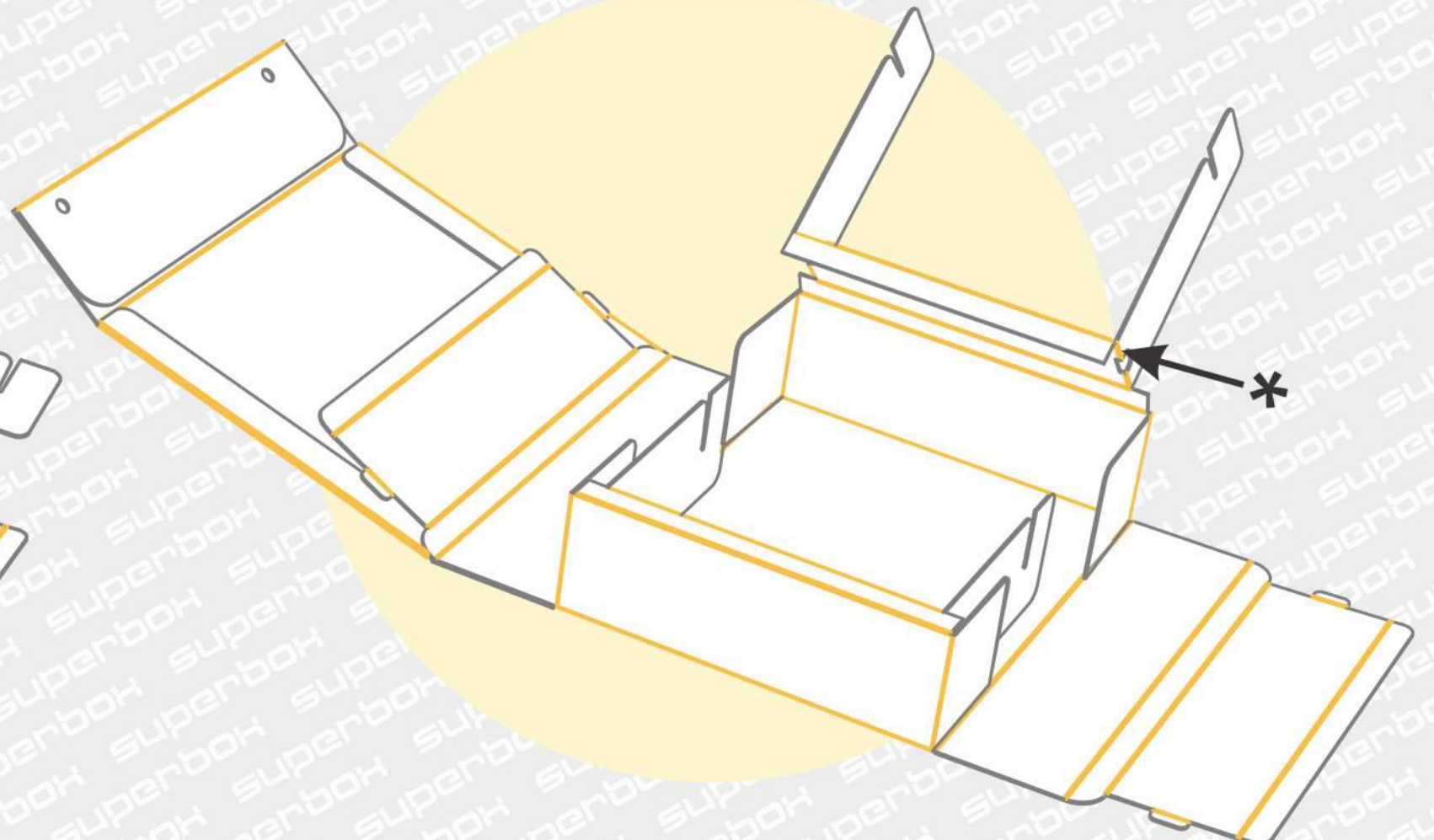
Folding instruction

For the locking gift box with magnets

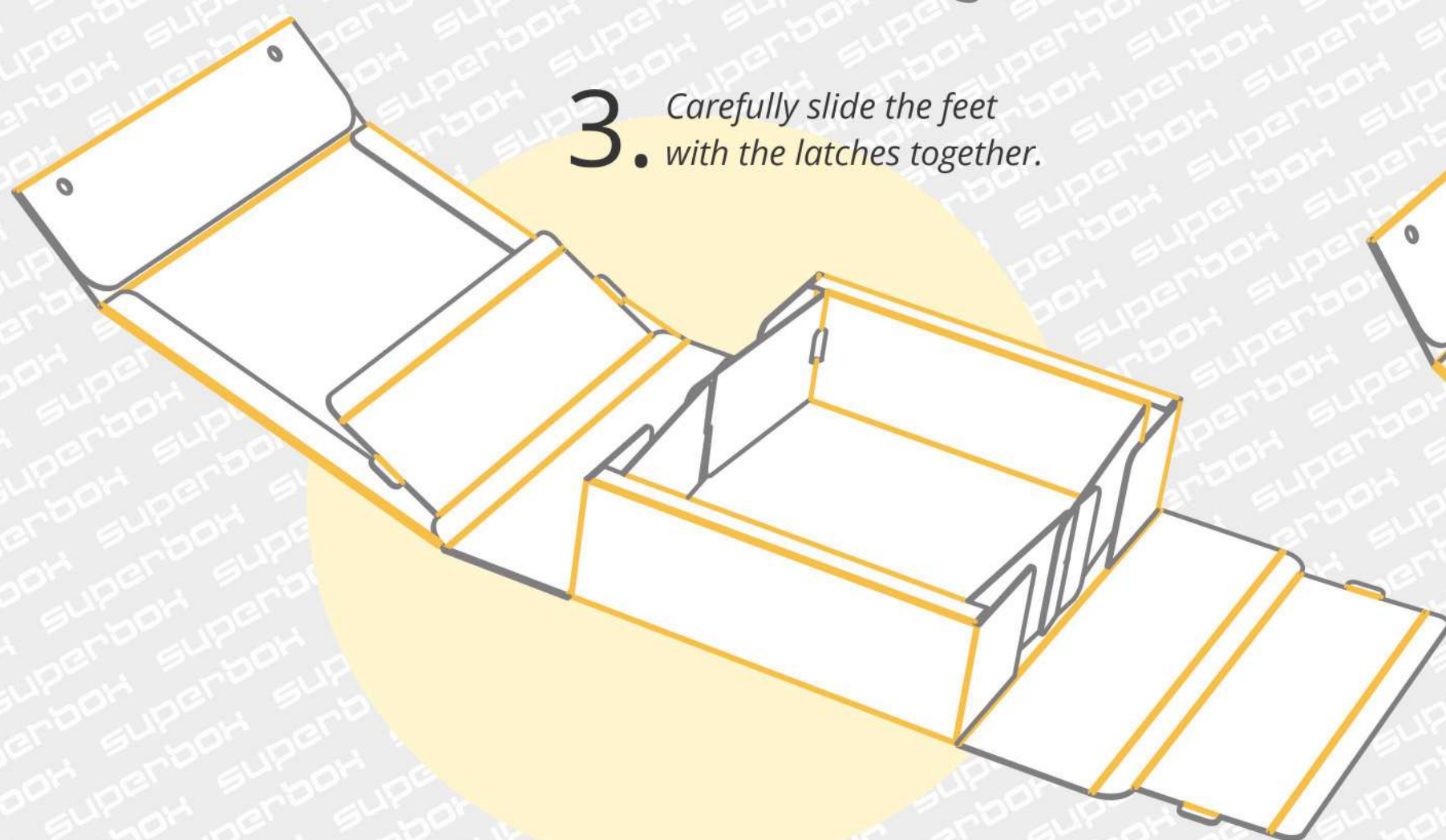
1. Place the template on a flat surface and put a little stress on the bending lines by folding them slightly back and forth.



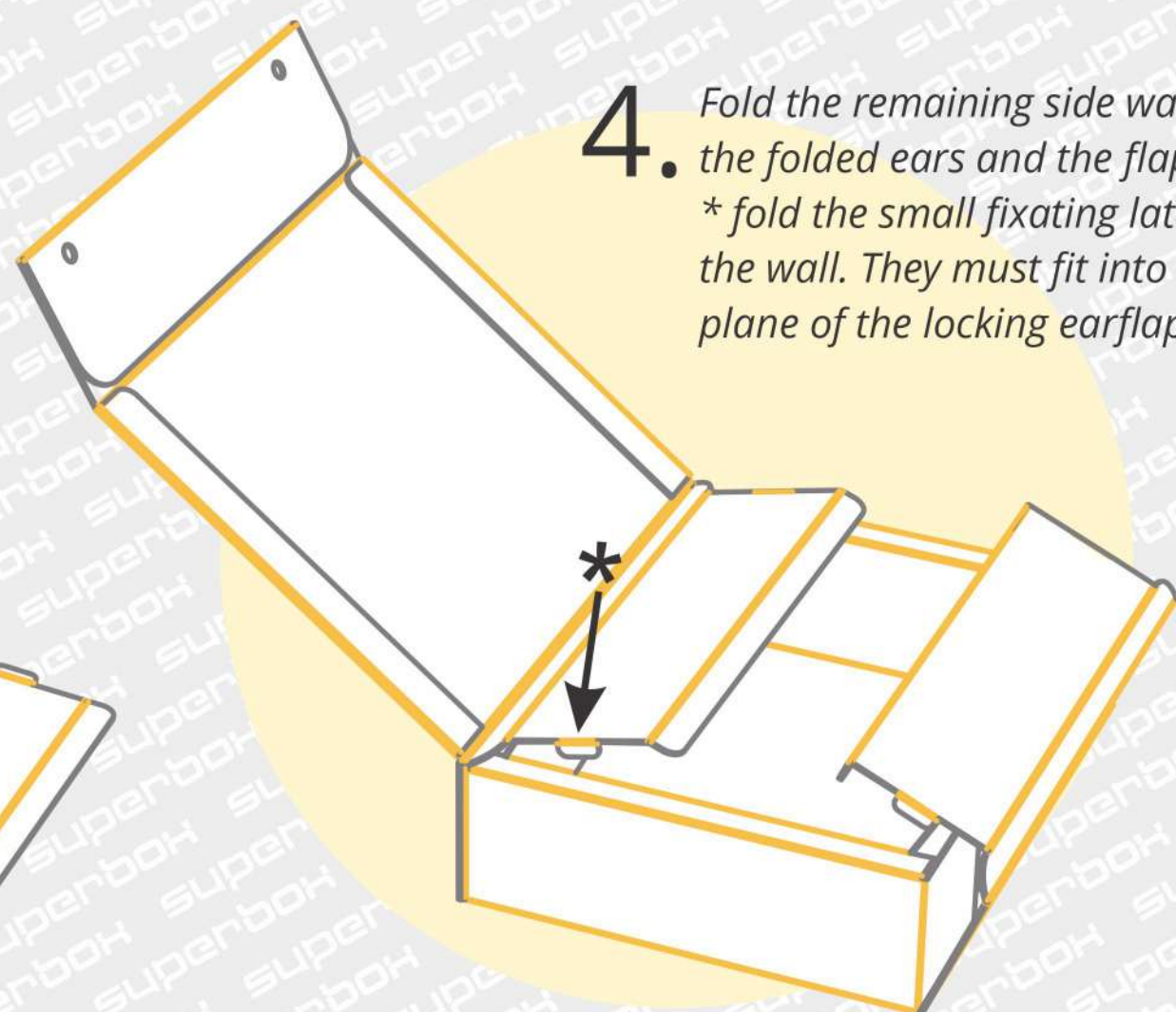
2. Carefully fold back the legs with the latches. Position the side walls and fold them so that the folded wall forms a nozzle.
* Carefully bend the bend lines near the legs with the latches to prevent these parts from tearing.



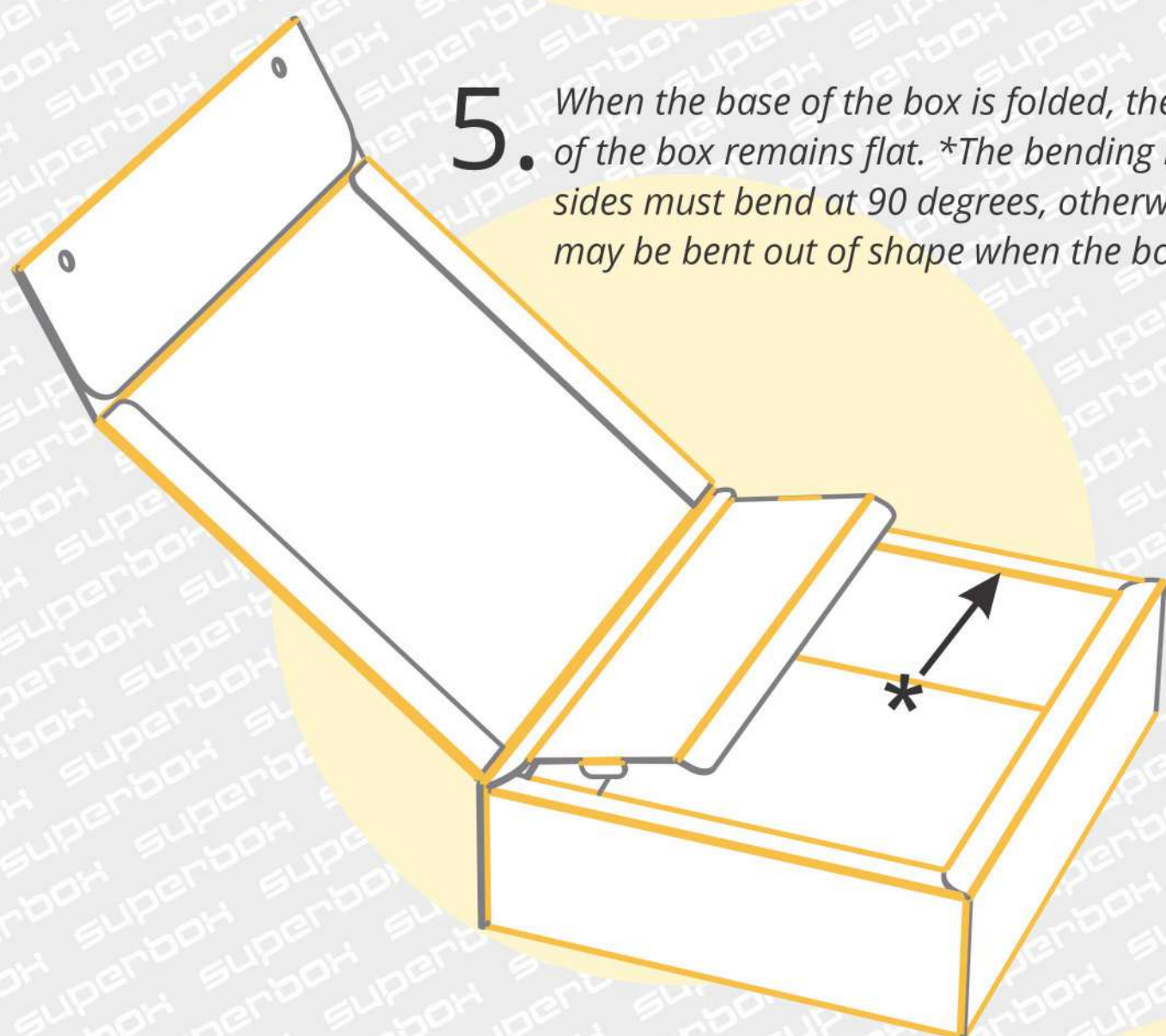
3. Carefully slide the feet with the latches together.



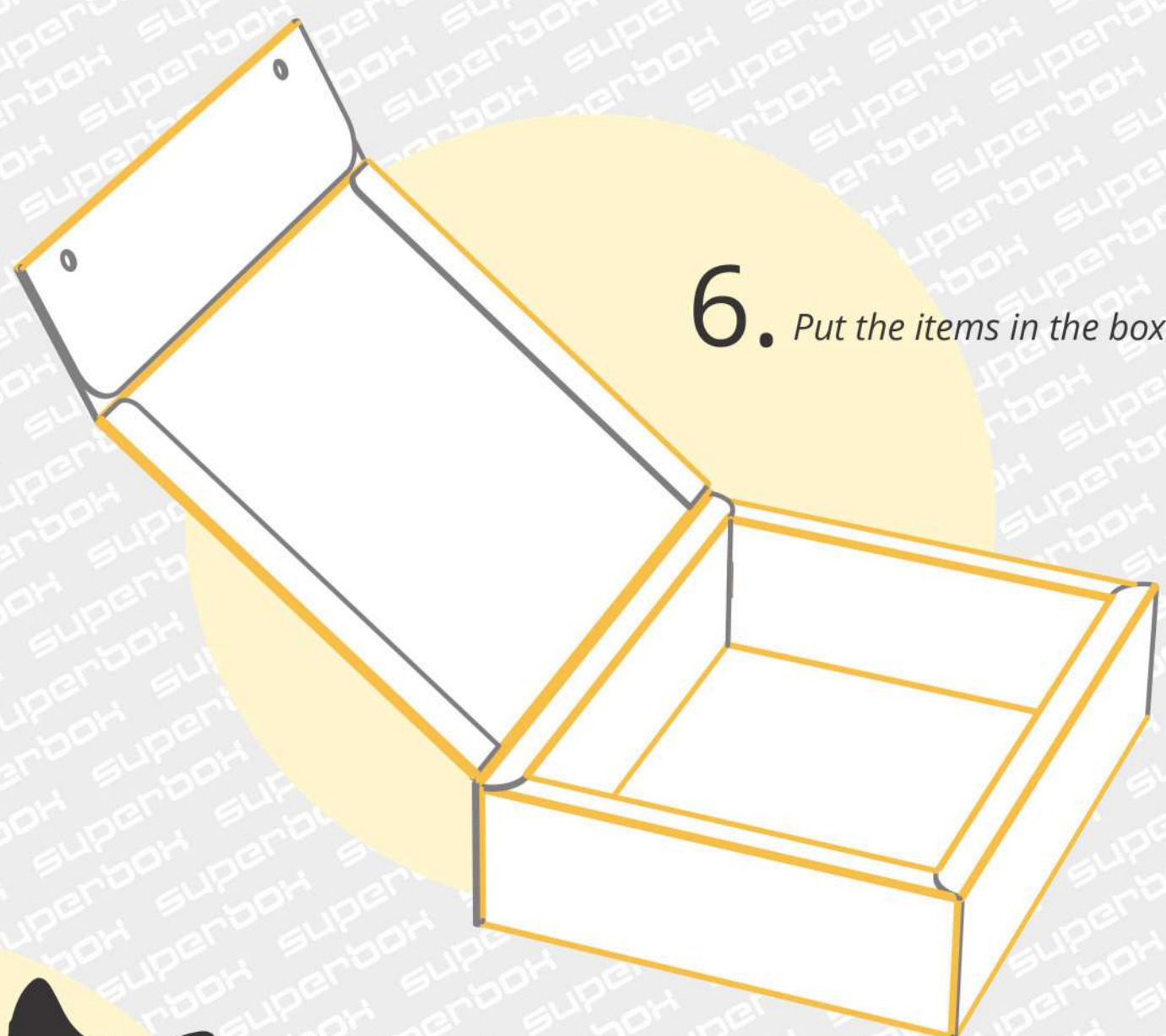
4. Fold the remaining side walls around the folded ears and the flaps of the folded walls.
* fold the small fixating latches while bending the wall. They must fit into the holes on the plane of the locking earflaps.



5. When the base of the box is folded, the bottom of the box remains flat. *The bending lines of the sides must bend at 90 degrees, otherwise the lid may be bent out of shape when the box is closed.



6. Put the items in the box.



7. Close the lid of the box and wait for the reaction of the human or cat who opens it.