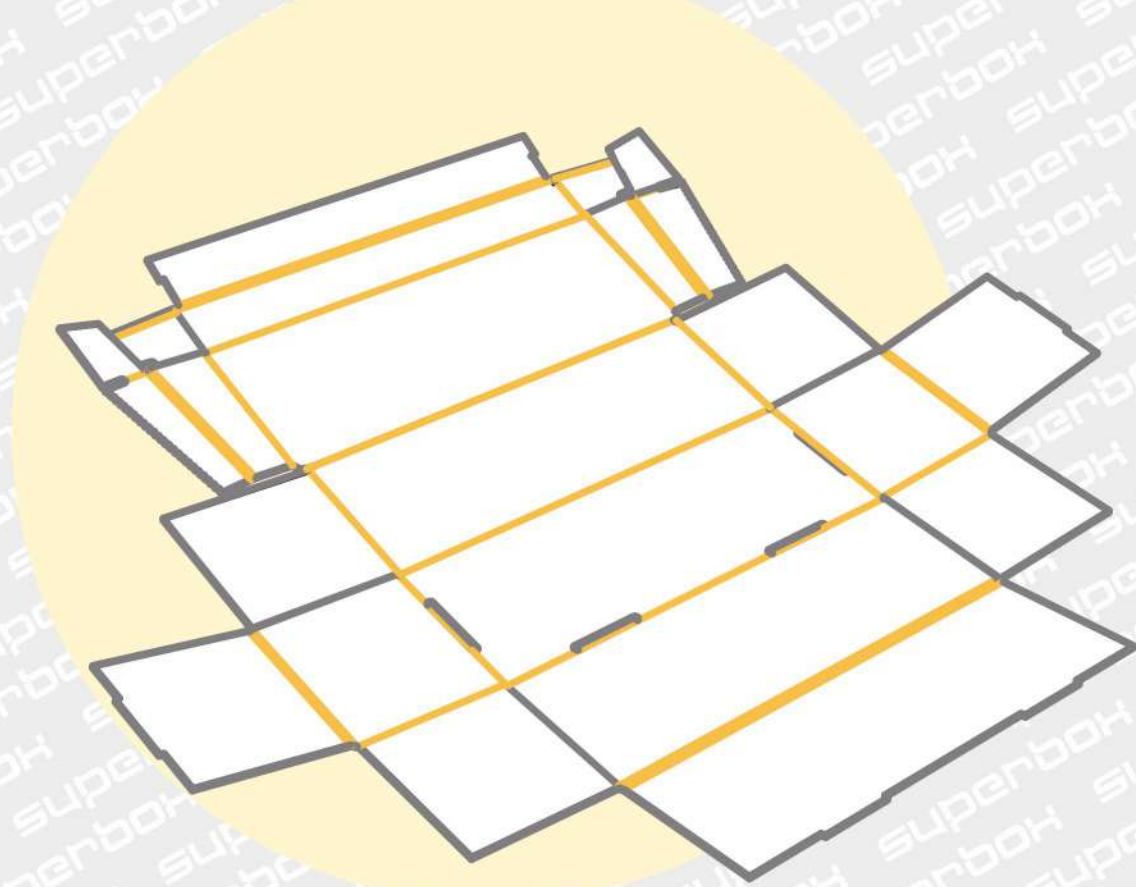


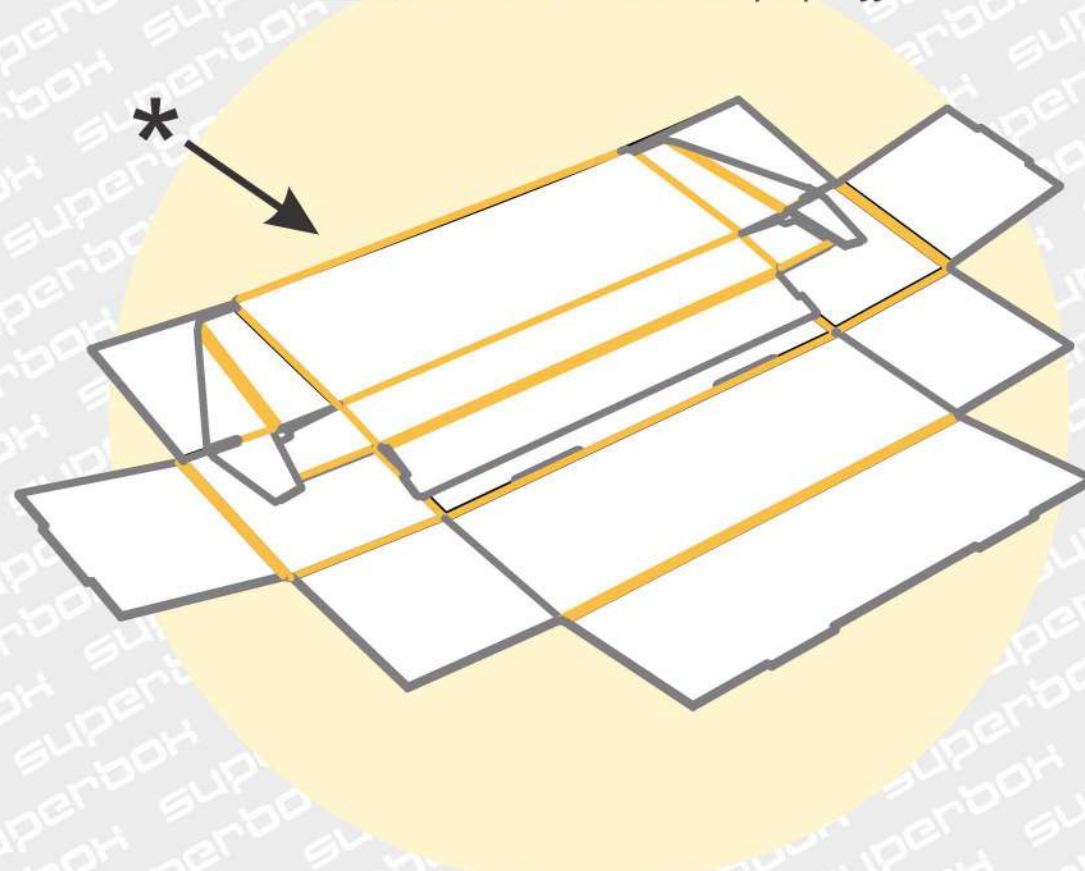
# Folding instruction

For the drink bottle box  
with a hinged lid

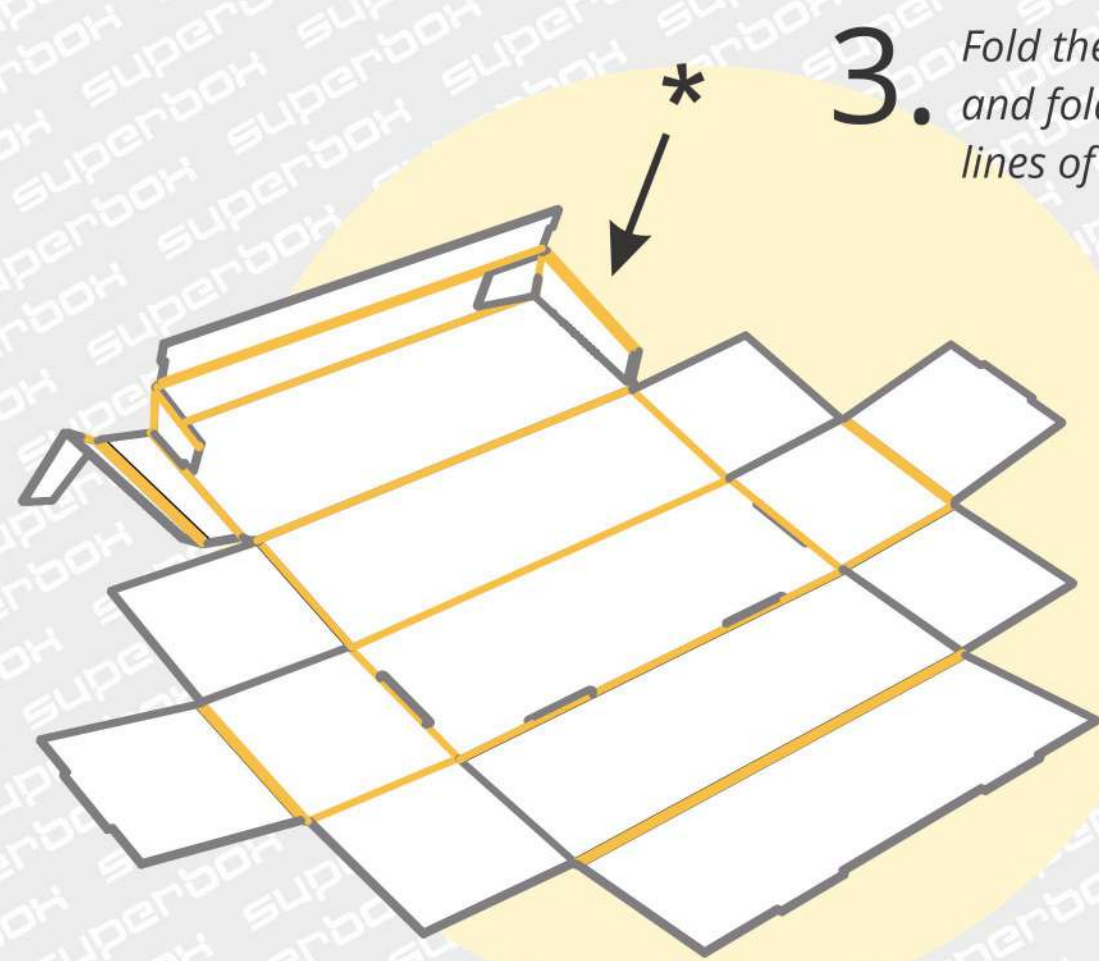
1. Place the template on a flat surface and put a little stress on the bending lines by folding them slightly back and forth.



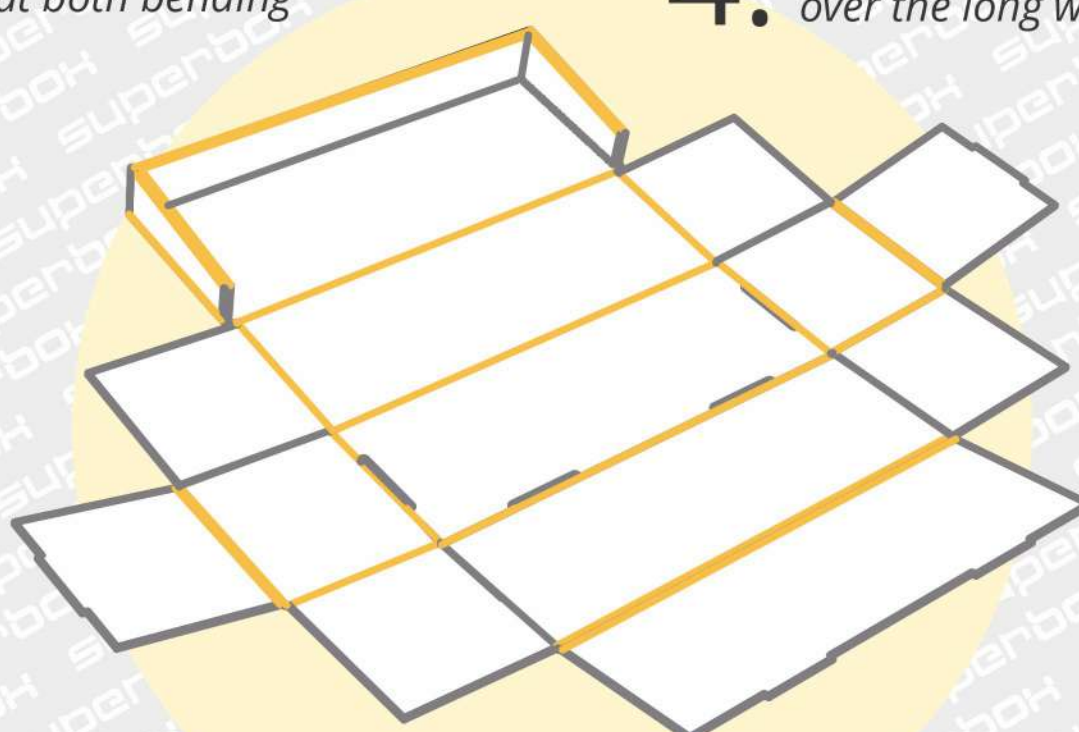
2. \* bend the closure line of the lid more tightly so that it will not pop off when the box is closed.



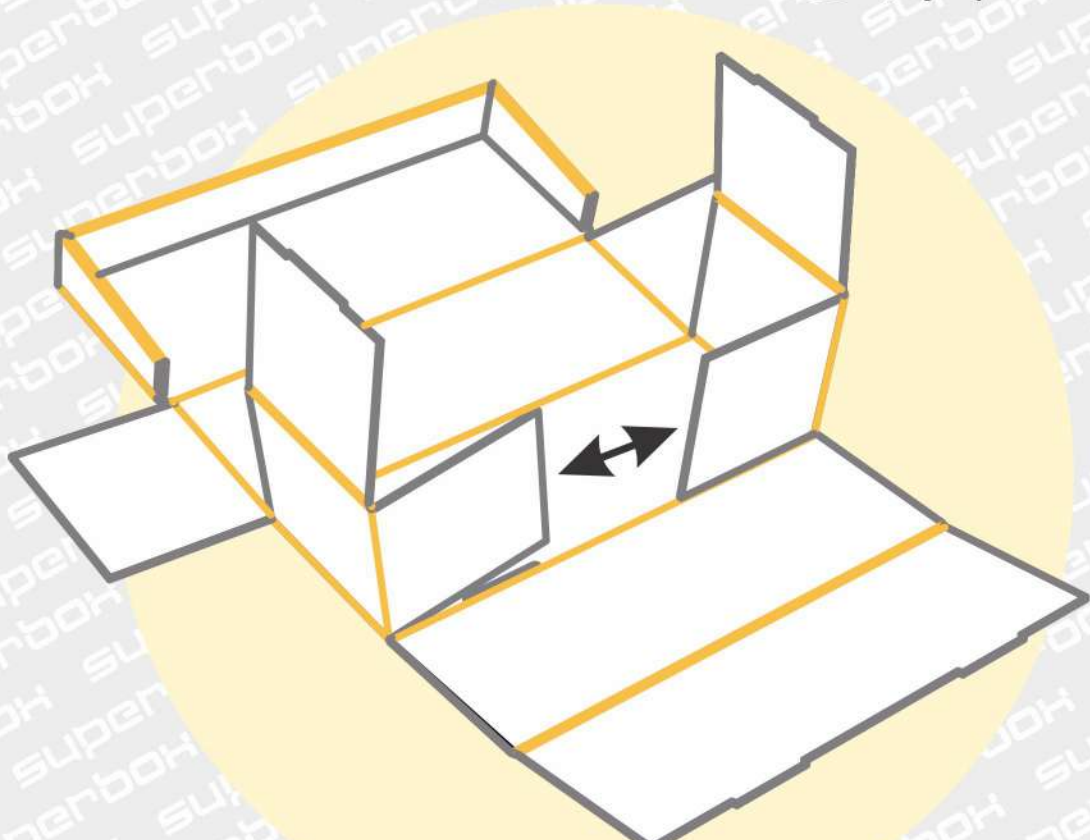
3. Fold the flaps on the side walls of the lid outwards and fold the side walls. \* Make sure that both bending lines of the side panels are bent.



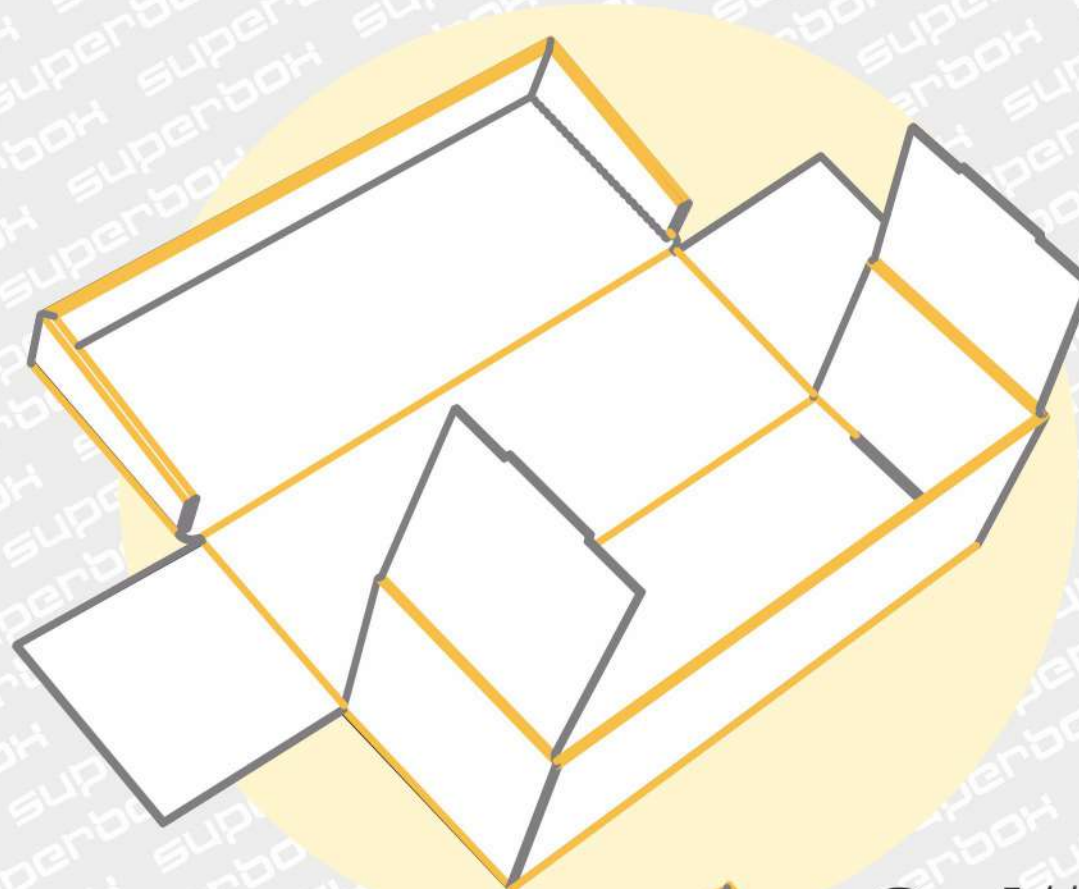
4. Fix the lid by also folding over the long wall.



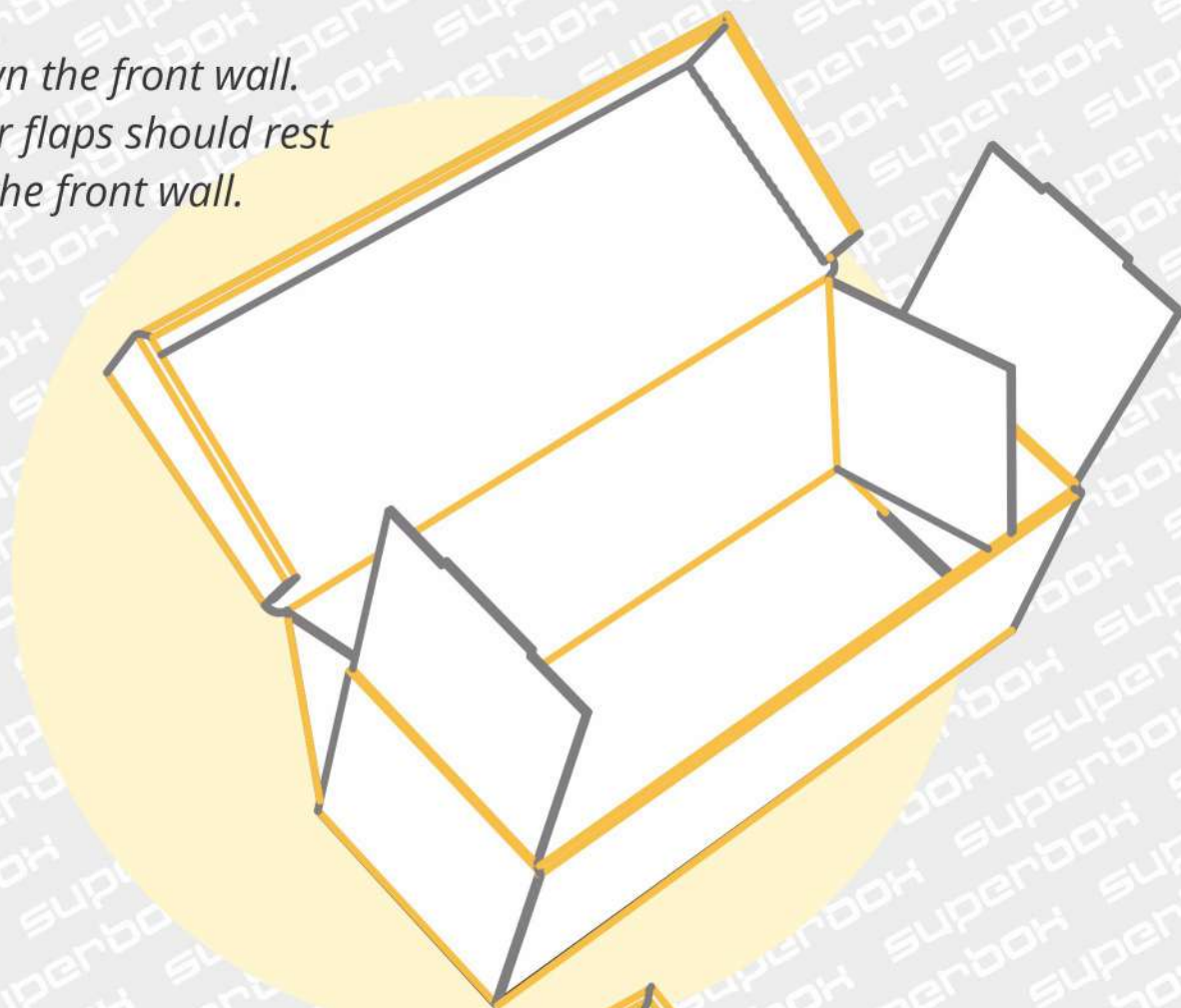
5. Fold the both side walls so that the inner flaps next to the wall would face each other.



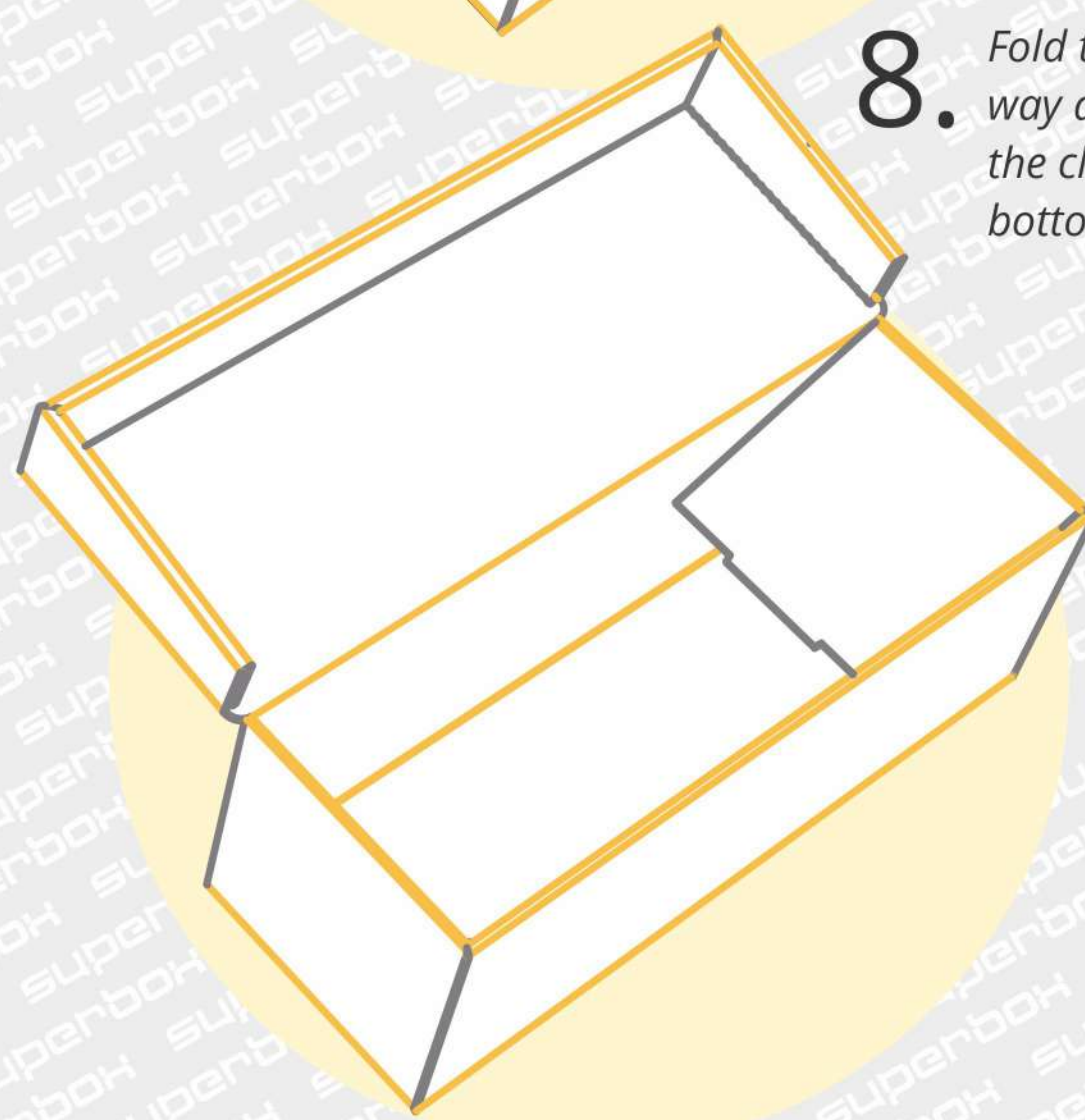
6. Fold the back wall over the double bending line by enveloping the two inner flaps and fix with the clips in the holes in the bottom.



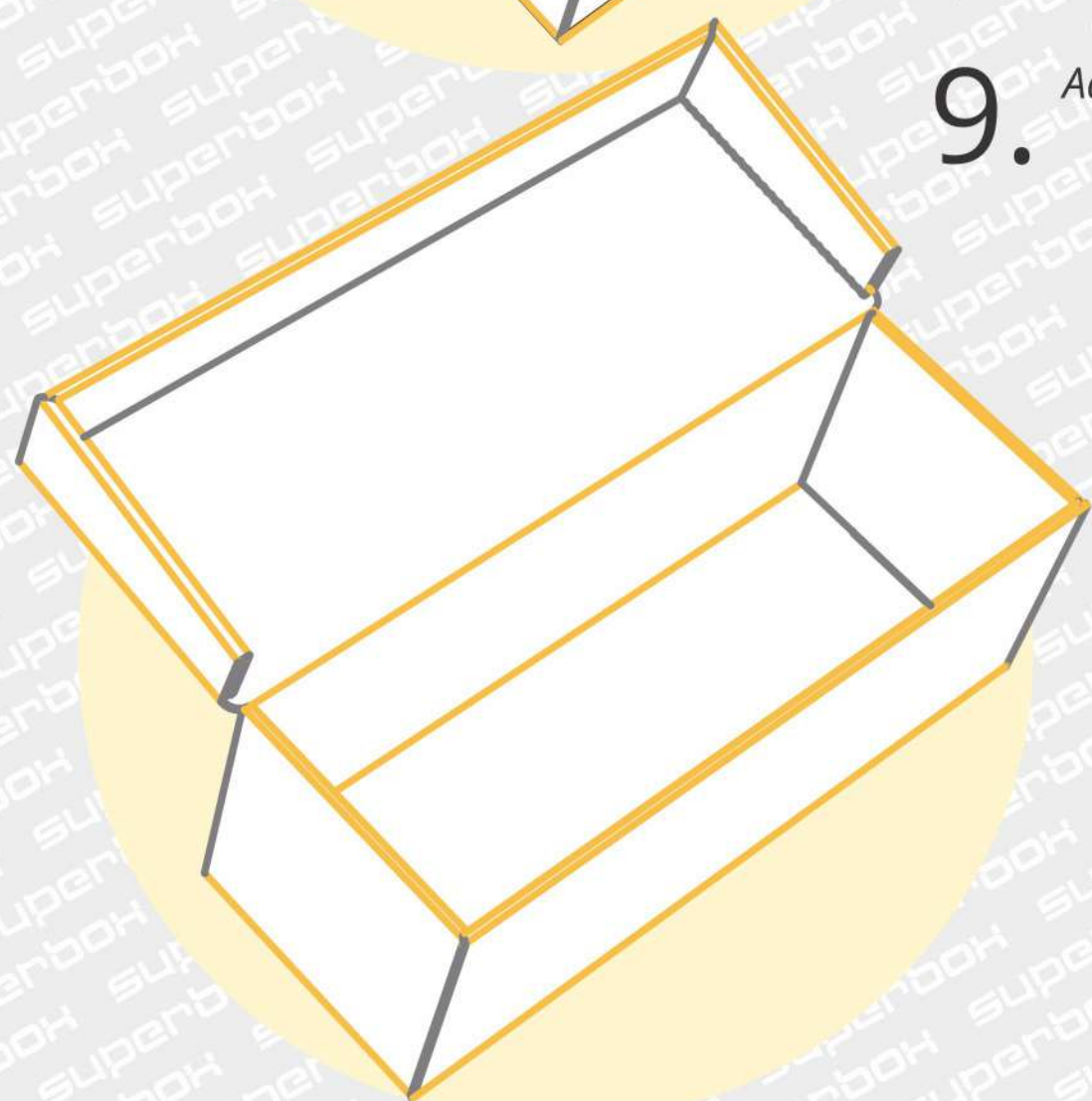
7. Fold down the front wall. The inner flaps should rest against the front wall.



8. Fold the side walls all the way down and fix them with the clips in the holes in the bottom.



9. Add the items you want.



10. Close the lid and enjoy the beautifully folded box.

